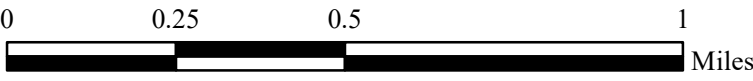
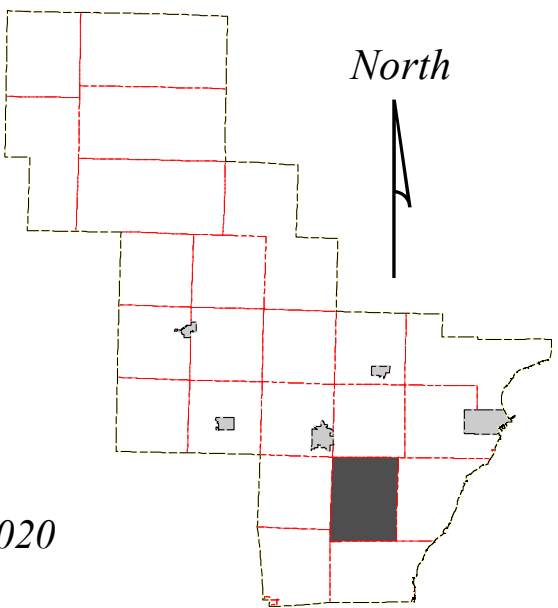


This map is neither a legally recorded map nor a survey and is not intended to be used as such. This map contains a compilation of records, information, and data to be used for reference purposes only. Oconto County is not responsible for any inaccuracies herein contained. Please contact the Oconto County Planning & Zoning Office at 920.834.6827 with any questions.

Source: Oconto County Planning, 2020



Map 2.2
Planning Area
Town of Abrams
Oconto County, Wisconsin

DRAFT
FOR REVIEW

Base Map Features

- | | |
|------------------|-----------------------|
| Federal Highway | County Boundary |
| State Highway | City/Village Boundary |
| County Highway | Township Boundary |
| Town Road | Public Land |
| Recreation Trail | |
| Railroad | |
| Surface Water | |

