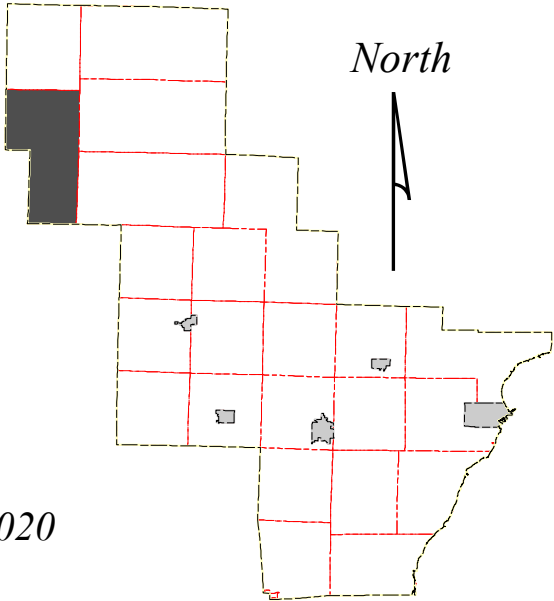
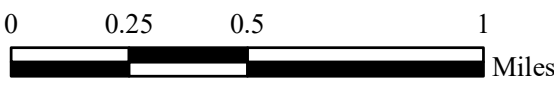


This map is neither a legally recorded map nor a survey and is not intended to be used as such. This map contains a compilation of records, information, and data to be used for reference purposes only. Oconto County is not responsible for any inaccuracies herein contained. Please contact the Oconto County Planning & Zoning Office at 920.834.6827 with any questions.

Source: Oconto County Planning, 2020



Map 3.1 20-Year General Plan Design Town of Doty Oconto County, Wisconsin

- | | | |
|----------------|------------------------------------|-----------------------------|
| Residential | Agriculture/Woodlands | Commercial |
| Mixed Use | Government/Institutional/Utilities | Industrial/Light Industrial |
| Transportation | Park/Recreation | Mineral Resources Overlay |

Base Map Features

- | | |
|------------------------------------|-----------------------|
| Federal Highway | County Boundary |
| State Highway | City/Village Boundary |
| County Highway | Township Boundary |
| Town Road | Public Land |
| Recreation Trail | Surface Water |
| Railroad | |
| 1.5 Mile Extraterritorial Boundary | |
| Sanitary Districts | |
| Sanitary Lagoon Buffer | |
| Environmental Corridors | |

