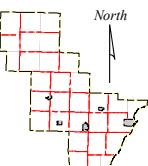


This map is neither a legally recorded map nor a survey and is not intended to be used as one. This drawing is a compilation of records, information and data used for reference purposes only. Oconto County is not responsible for any inaccuracies herein contained.



0 250 500 1,000 Feet



### Map 1.1 Anderson Lake Highly Developed Designated Area

Highly Developed Shoreline Designation

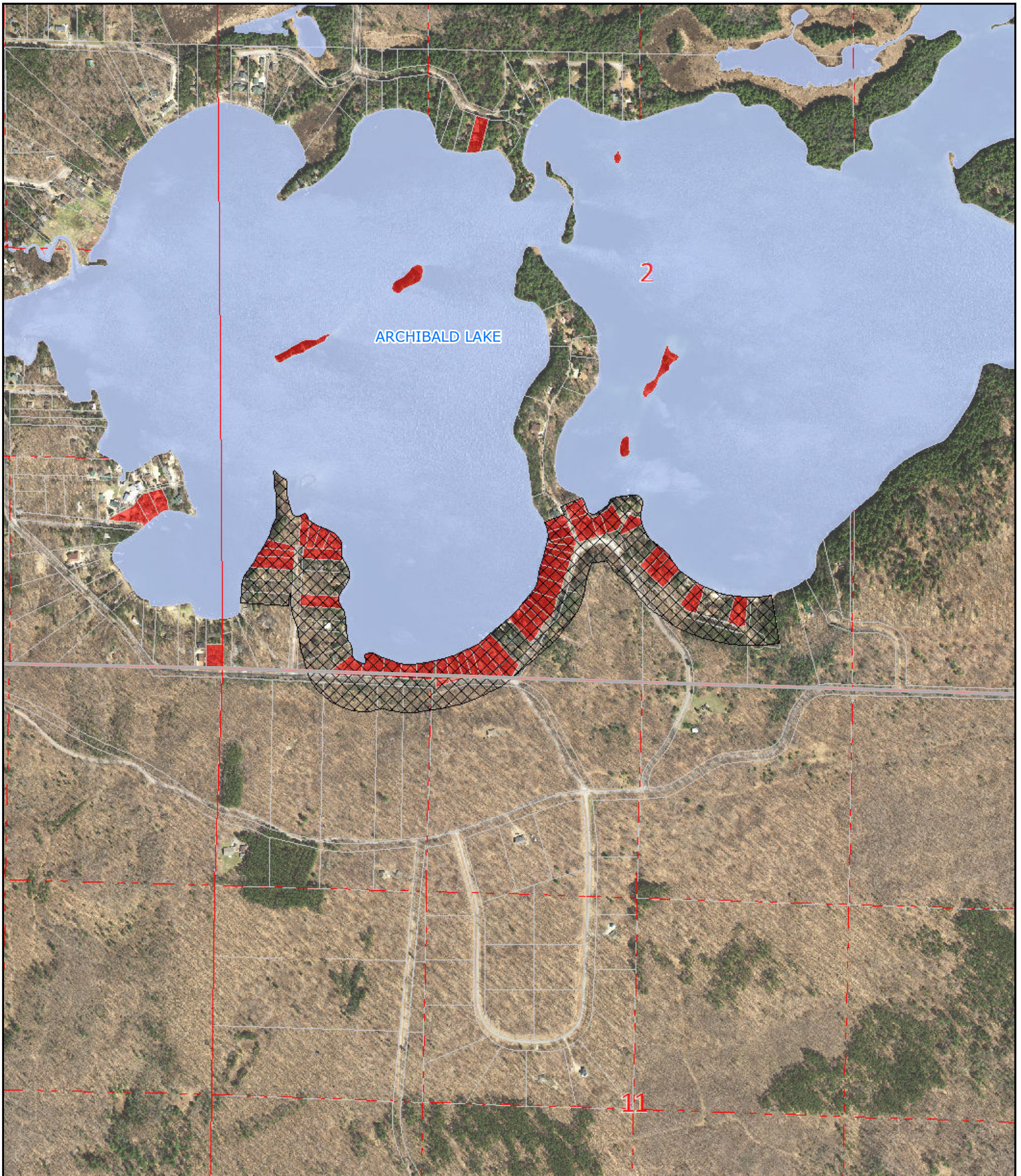
*Shoreland areas are designated as a highly developed shoreline pursuant to s. 26.903 1. b.*

### Base Map Features

- |  |              |
|--|--------------|
| County Boundary                        | Section Line |
| Town Boundary                          | County       |
| City/Village Boundary                  | Federal      |
| Parcel Boundary                        | State        |
| Sanitary District                      |              |
| Parcels 20,000 sq. ft. or Less in Size |              |

Source: Oconto County Planning; August 2016  
Reviewed and approved by DNR; August 2016

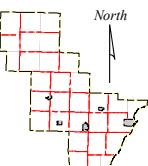




This map is neither a legally recorded map nor a survey and is not intended to be used as one. This drawing is a compilation of records, information and data used for reference purposes only. Oconto County is not responsible for any inaccuracies herein contained.



0 250 500 1,000 Feet



## Map 1.2 Archibald Lake Highly Developed Designated Area

Highly Developed Shoreline Designation

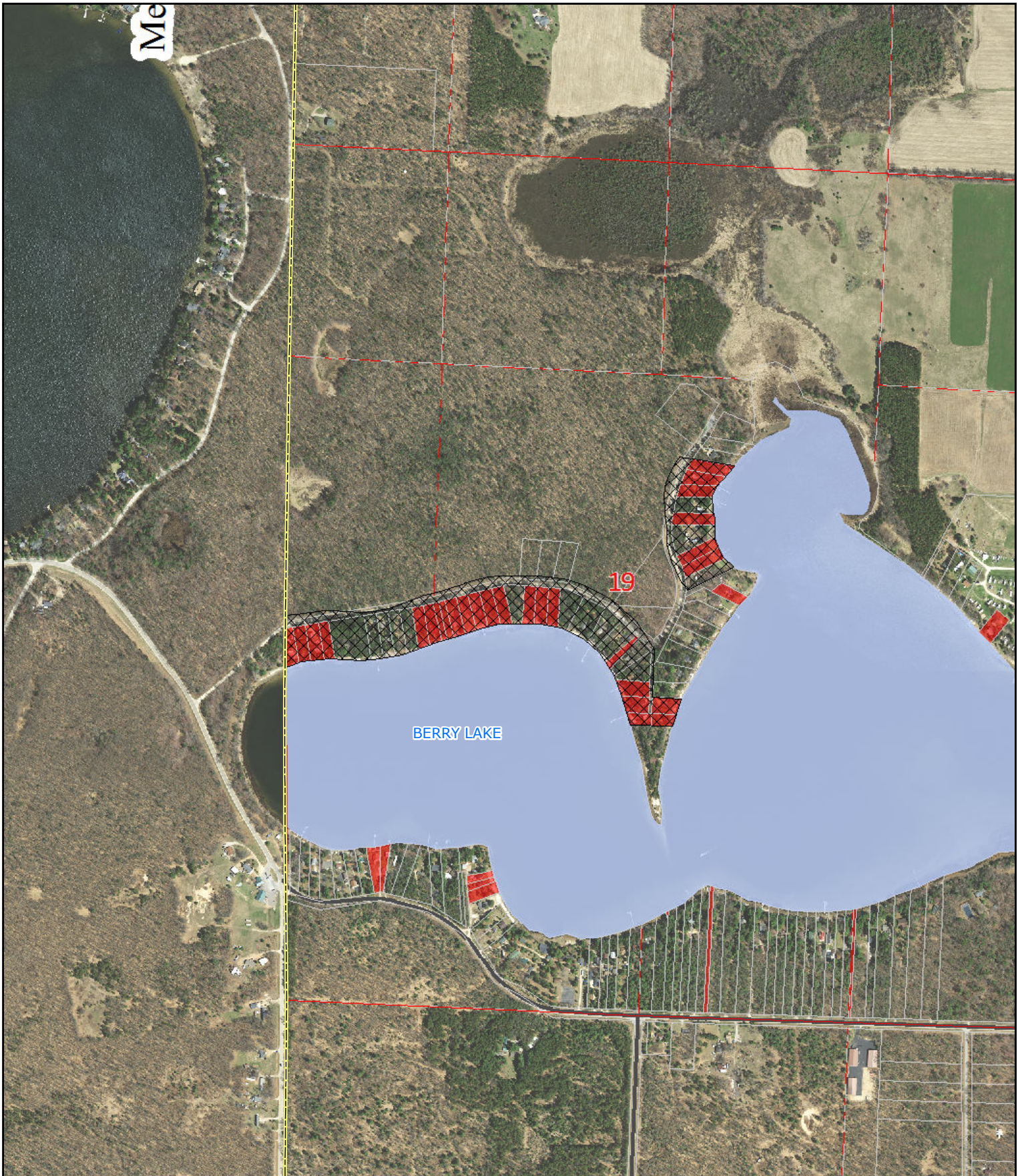
*Shoreland areas are designated as a highly developed shoreline pursuant to s. 26.903 1. b.*

### Base Map Features

- |  |              |
|--|--------------|
| County Boundary                        | Section Line |
| Town Boundary                          | County       |
| City/Village Boundary                  | Federal      |
| Parcel Boundary                        | State        |
| Sanitary District                      |              |
| Parcels 20,000 sq. ft. or Less in Size |              |

Source: Oconto County Planning; August 2016  
Reviewed and approved by DNR; August 2016





This map is neither a legally recorded map nor a survey and is not intended to be used as one. This drawing is a compilation of records, information and data used for reference purposes only. Oconto County is not responsible for any inaccuracies herein contained.



0 250 500 1,000 Feet

### Map 1.3 Berry Lake Highly Developed Designated Area

Highly Developed Shoreline Designation

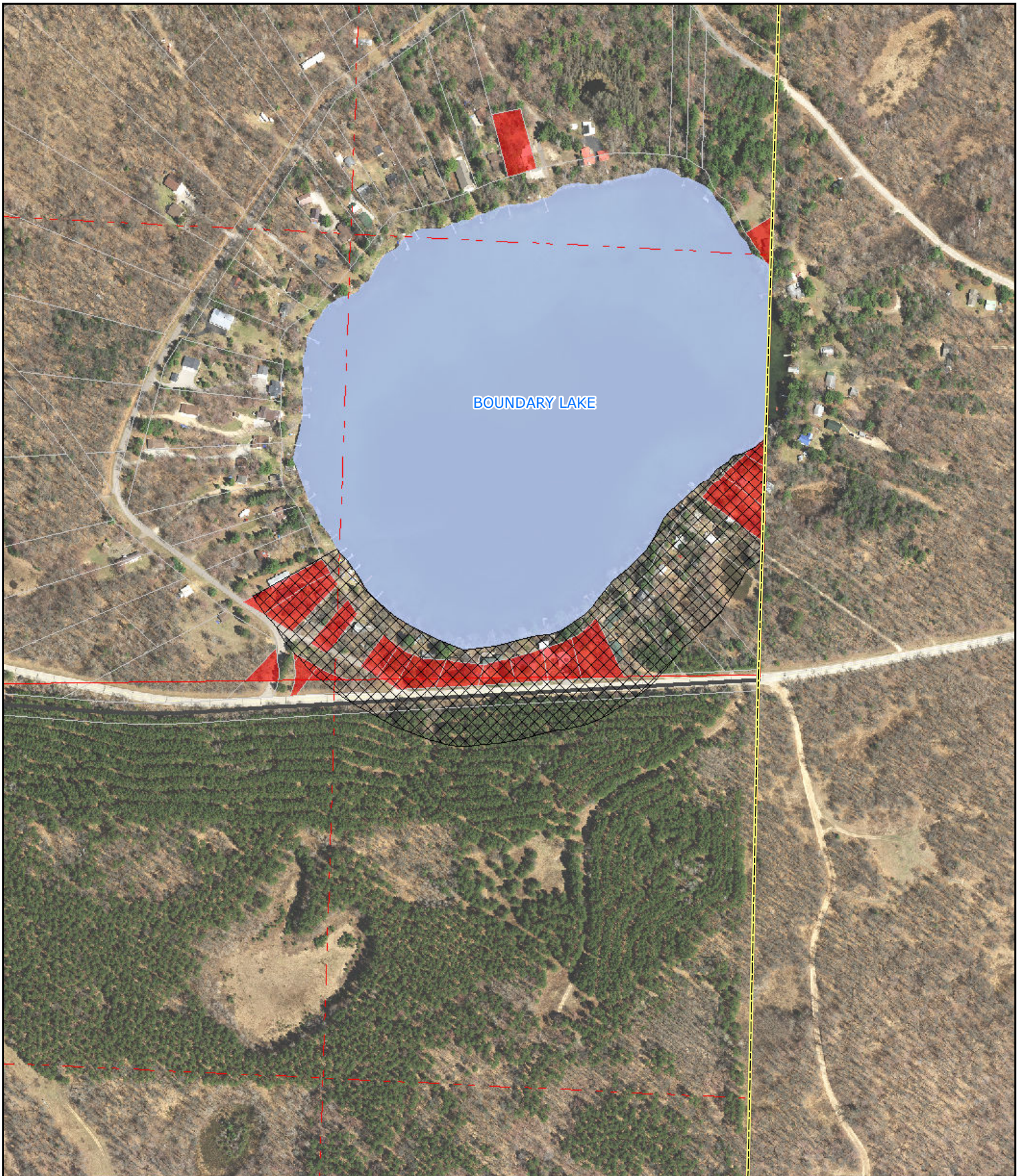
*Shoreland areas are designated as a highly developed shoreline pursuant to s. 26.903 1. b.*

#### Base Map Features

- |  |              |
|--|--------------|
| County Boundary                        | Section Line |
| Town Boundary                          | County       |
| City/Village Boundary                  | Federal      |
| Parcel Boundary                        | State        |
| Sanitary District                      |              |
| Parcels 20,000 sq. ft. or Less in Size |              |

Source: Oconto County Planning; August 2016  
Reviewed and approved by DNR; August 2016

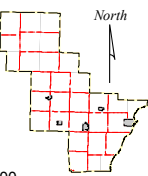




This map is neither a legally recorded map nor a survey and is not intended to be used as one. This drawing is a compilation of records, information and data used for reference purposes only. Oconto County is not responsible for any inaccuracies herein contained.



0 125 250 500 Feet



## Map 1.4 Boundary Lake Highly Developed Designated Area

Highly Developed Shoreline Designation

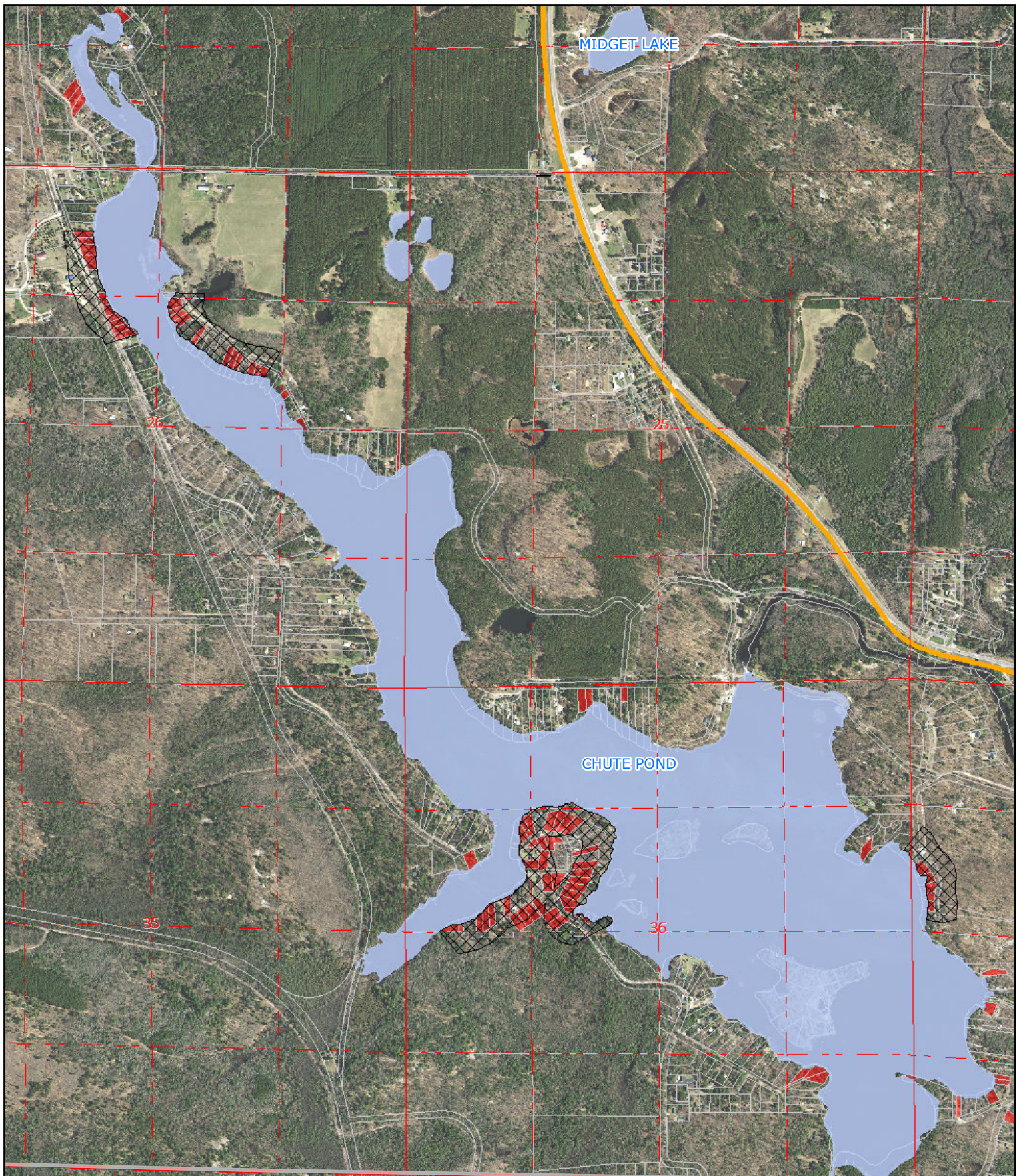
*Shoreland areas are designated as a highly developed shoreline pursuant to s. 26.903 1. b.*

### Base Map Features

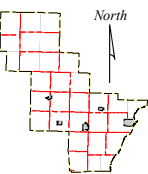
- |  |              |
|--|--------------|
| County Boundary                        | Section Line |
| Town Boundary                          | County       |
| City/Village Boundary                  | Federal      |
| Parcel Boundary                        | State        |
| Sanitary District                      |              |
| Parcels 20,000 sq. ft. or Less in Size |              |

Source: Oconto County Planning; August 2016  
Reviewed and approved by DNR; August 2016






This map is neither a legally recorded map nor a survey and is not intended to be used as one. This drawing is a compilation of records, information and data used for reference purposes only. Oconto County is not responsible for any inaccuracies herein contained.


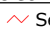










## Map 1.5 Chute Pond Highly Developed Designated Area

 Highly Developed Shoreline Designation

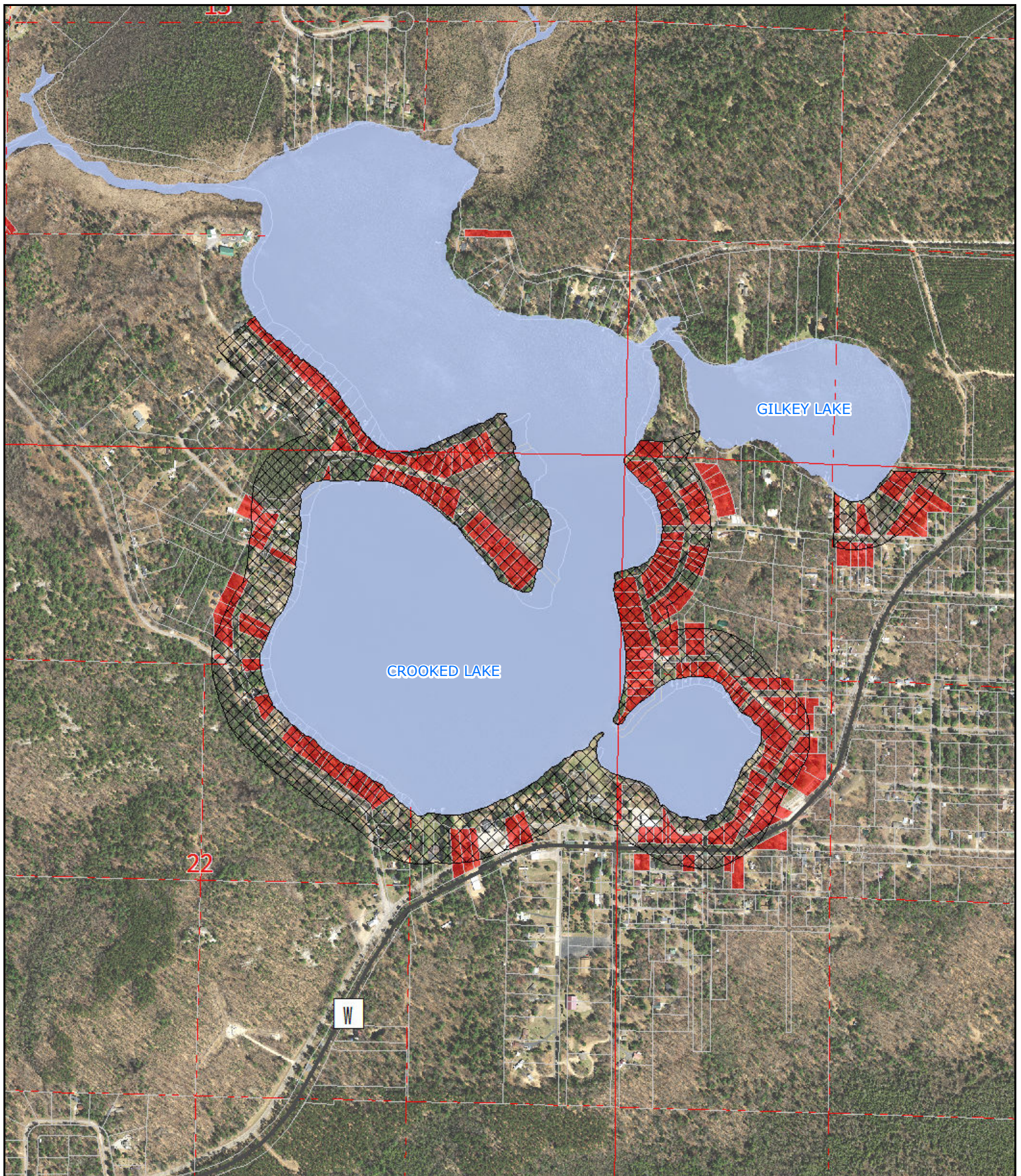
*Shoreland areas are designated as a highly developed shoreline pursuant to s. 26.903 1. b.*

### Base Map Features

- |  |  |
|--|--|
|  County Boundary                        |  Section Line |
|  Town Boundary                          |  County       |
|  City/Village Boundary                  |  Federal      |
|  Parcel Boundary                        |  State        |
|  Sanitary District                      |  |
|  Parcels 20,000 sq. ft. or Less in Size |  |

Source: Oconto County Planning; August 2016  
Reviewed and approved by DNR; August 2016

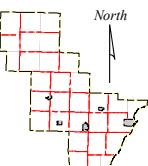




This map is neither a legally recorded map nor a survey and is not intended to be used as one. This drawing is a compilation of records, information and data used for reference purposes only. Oconto County is not responsible for any inaccuracies herein contained.



0 250 500 1,000 Feet



### Map 1.6 Crooked Lake Highly Developed Designated Area

Highly Developed Shoreline Designation

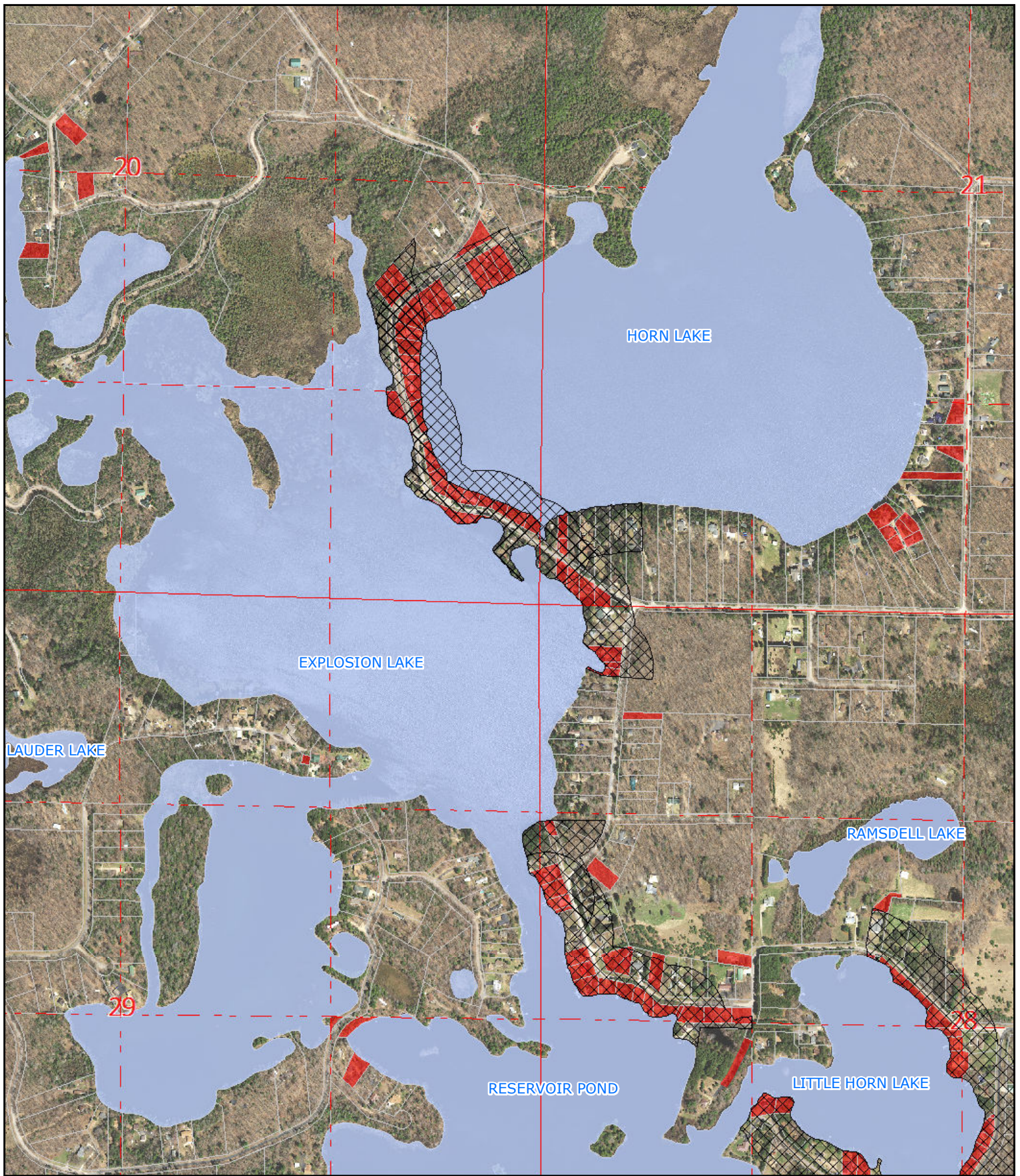
*Shoreland areas are designated as a highly developed shoreline pursuant to s. 26.903 1. b.*

#### Base Map Features

- |  |              |
|--|--------------|
| County Boundary                        | Section Line |
| Town Boundary                          | County       |
| City/Village Boundary                  | Federal      |
| Parcel Boundary                        | State        |
| Sanitary District                      |              |
| Parcels 20,000 sq. ft. or Less in Size |              |

Source: Oconto County Planning; August 2016  
Reviewed and approved by DNR; August 2016





This map is neither a legally recorded map nor a survey and is not intended to be used as one. This drawing is a compilation of records, information and data used for reference purposes only. Oconto County is not responsible for any inaccuracies herein contained.

**Oconto County**  
Wisconsin  
Oconto County Planning & Zoning

0 250 500 1,000 Feet

North

### Map 1.7

#### Explosion Lake

#### Highly Developed Designated Area

Highly Developed Shoreline Designation

*Shoreland areas are designated as a highly developed shoreline pursuant to s. 26.903 1. b.*

#### Base Map Features

County Boundary	Section Line
Town Boundary	County
City/Village Boundary	Federal
Parcel Boundary	State
Sanitary District	
Parcels 20,000 sq. ft. or Less in Size	

Source: Oconto County Planning; August 2016  
Reviewed and approved by DNR; August 2016

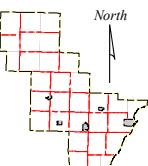





This map is neither a legally recorded map nor a survey and is not intended to be used as one. This drawing is a compilation of records, information and data used for reference purposes only. Oconto County is not responsible for any inaccuracies herein contained.



0 125 250 500 Feet


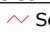










## Map 1.8 Frog Lake Highly Developed Designated Area

 Highly Developed Shoreline Designation

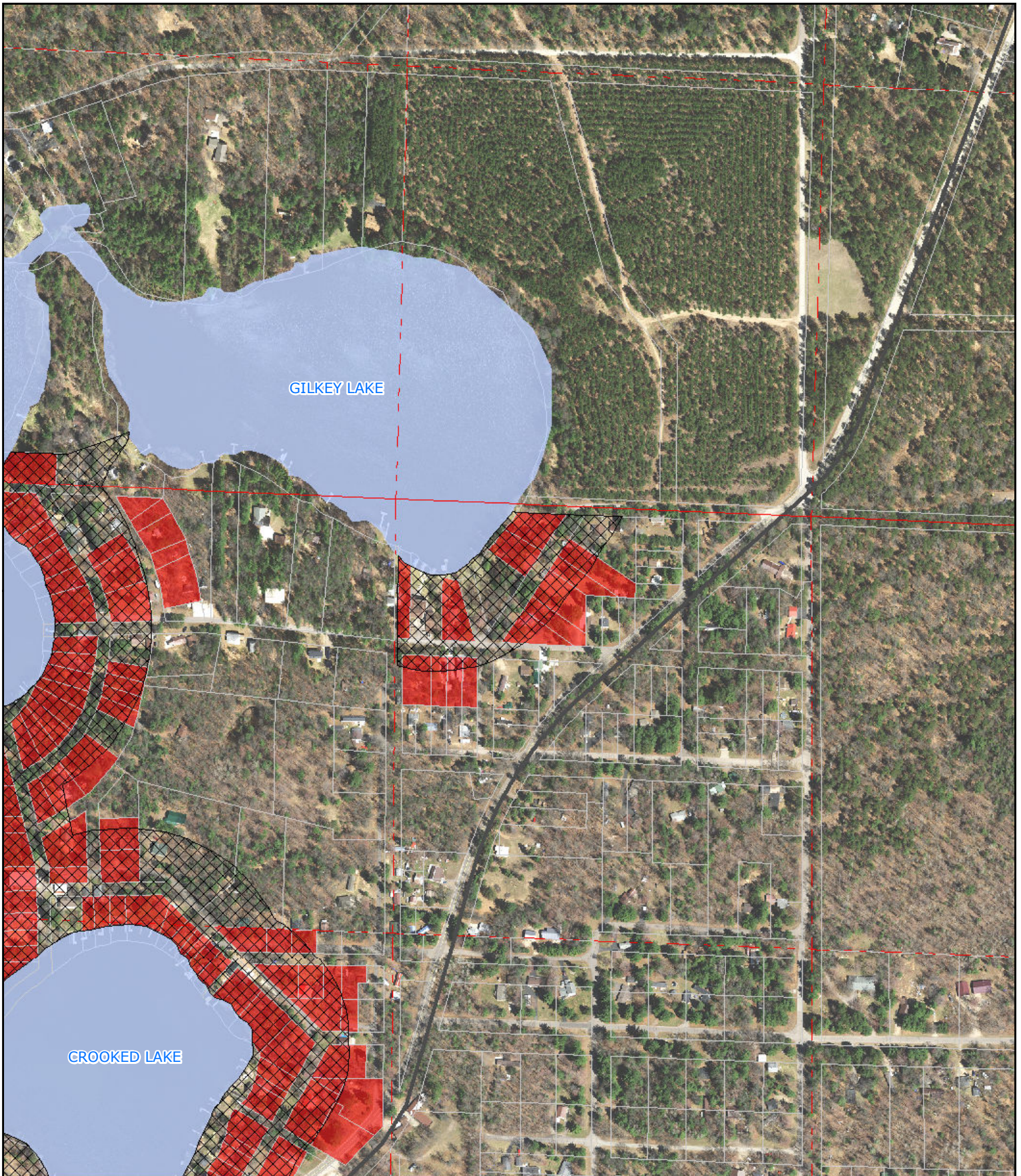
*Shoreland areas are designated as a highly developed shoreline pursuant to s. 26.903 1. b.*

### Base Map Features

- |  |  |
|--|--|
|  County Boundary                        |  Section Line |
|  Town Boundary                          |  County       |
|  City/Village Boundary                  |  Federal      |
|  Parcel Boundary                        |  State        |
|  Sanitary District                      |  |
|  Parcels 20,000 sq. ft. or Less in Size |  |

Source: Oconto County Planning; August 2016  
Reviewed and approved by DNR; August 2016

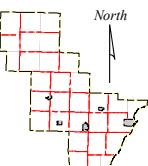




This map is neither a legally recorded map nor a survey and is not intended to be used as one. This drawing is a compilation of records, information and data used for reference purposes only. Oconto County is not responsible for any inaccuracies herein contained.



0 125 250 500 Feet



## Map 1.9 Gilkey Lake Highly Developed Designated Area

Highly Developed Shoreline Designation

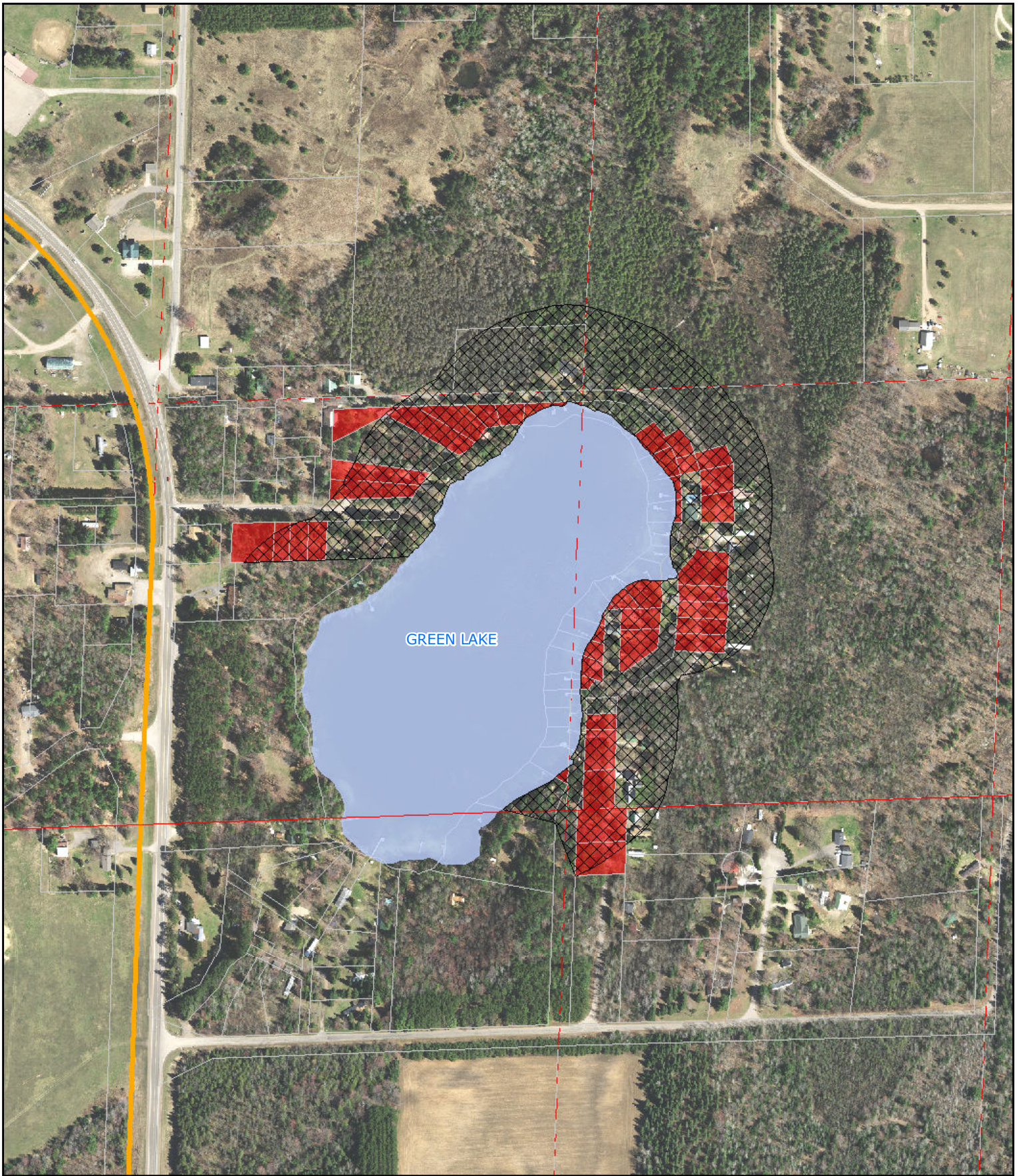
*Shoreland areas are designated as a highly developed shoreline pursuant to s. 26.903 1. b.*

### Base Map Features

- |  |              |
|--|--------------|
| County Boundary                        | Section Line |
| Town Boundary                          | County       |
| City/Village Boundary                  | Federal      |
| Parcel Boundary                        | State        |
| Sanitary District                      |              |
| Parcels 20,000 sq. ft. or Less in Size |              |

Source: Oconto County Planning; August 2016  
Reviewed and approved by DNR; August 2016

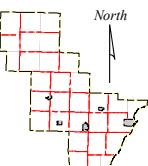




This map is neither a legally recorded map nor a survey and is not intended to be used as one. This drawing is a compilation of records, information and data used for reference purposes only. Oconto County is not responsible for any inaccuracies herein contained.



0 125 250 500 Feet



## Map 1.10 Green Lake Highly Developed Designated Area

Highly Developed Shoreline Designation

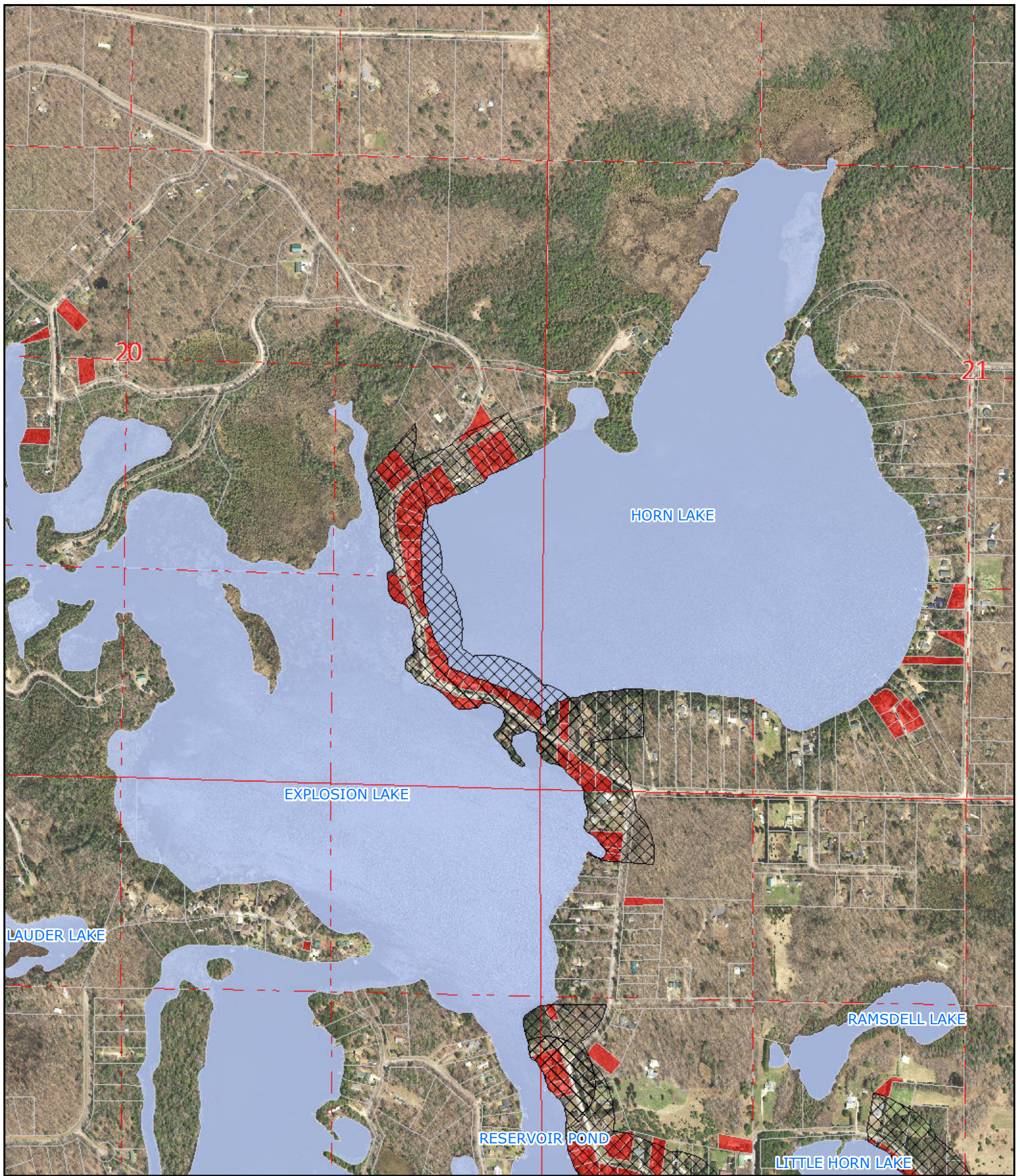
*Shoreland areas are designated as a highly developed shoreline pursuant to s. 26.903 1. b.*

### Base Map Features

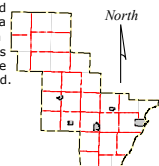
- |  |              |
|--|--------------|
| County Boundary                        | Section Line |
| Town Boundary                          | County       |
| City/Village Boundary                  | Federal      |
| Parcel Boundary                        | State        |
| Sanitary District                      |              |
| Parcels 20,000 sq. ft. or Less in Size |              |

Source: Oconto County Planning; August 2016  
Reviewed and approved by DNR; August 2016





This map is neither a legally recorded map nor a survey and is not intended to be used as one. This drawing is a compilation of records, information and data used for reference purposes only. Oconto County is not responsible for any inaccuracies herein contained.



### Map 1.11 Horn Lake Highly Developed Designated Area

Highly Developed Shoreline Designation

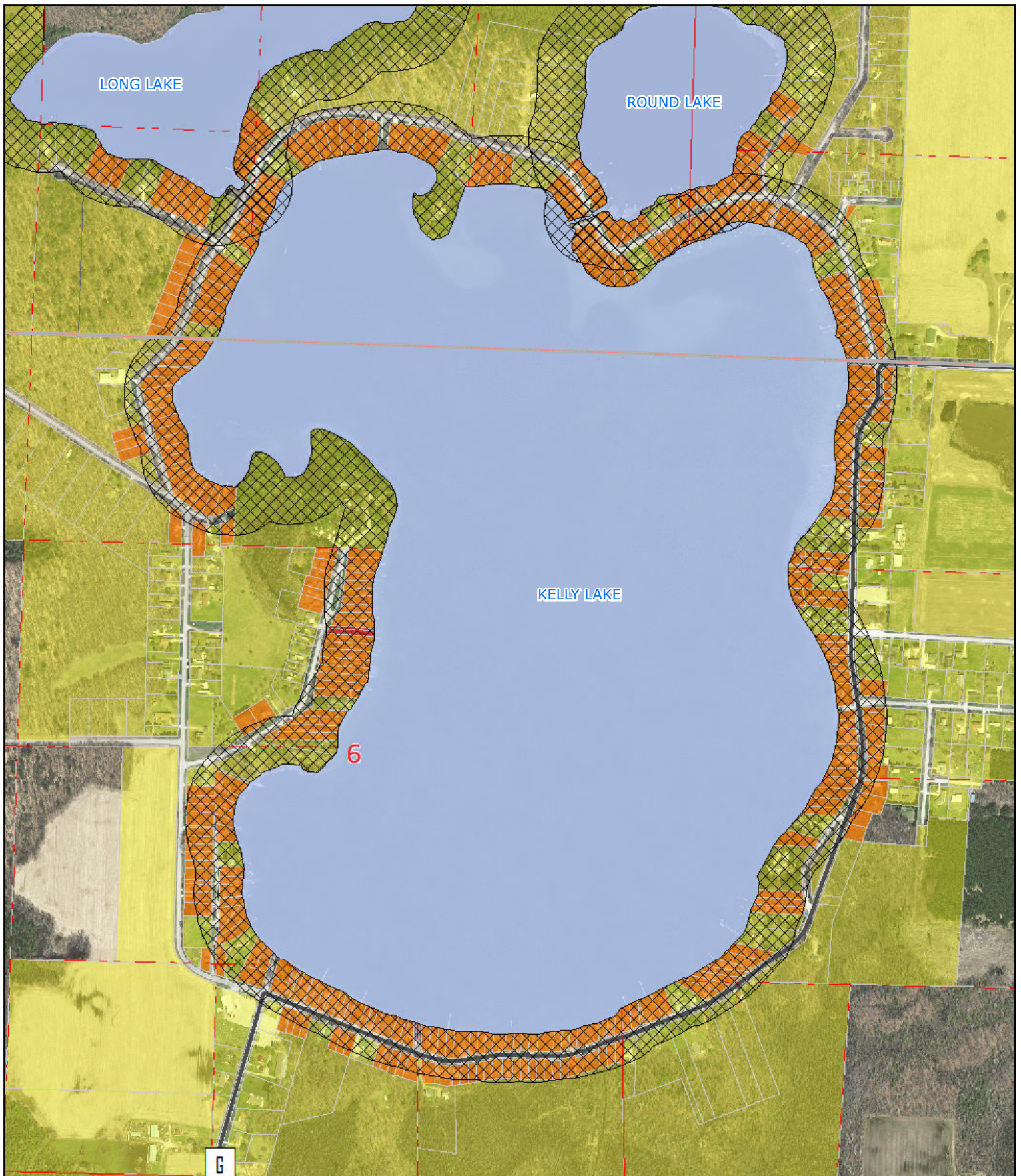
*Shoreland areas are designated as a highly developed shoreline pursuant to s. 26.903 1. b.*

### Base Map Features

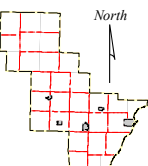
- |  |              |
|--|--------------|
| County Boundary                        | Section Line |
| Town Boundary                          | County       |
| City/Village Boundary                  | Federal      |
| Parcel Boundary                        | State        |
| Sanitary District                      |              |
| Parcels 20,000 sq. ft. or Less in Size |              |

Source: Oconto County Planning; August 2016  
Reviewed and approved by DNR; August 2016





This map is neither a legally recorded map nor a survey and is not intended to be used as one. This drawing is a compilation of records, information and data used for reference purposes only. Oconto County is not responsible for any inaccuracies herein contained.



## Map 1.12

Kelly Lake

### Highly Developed Designated Area

Highly Developed Shoreline Designation

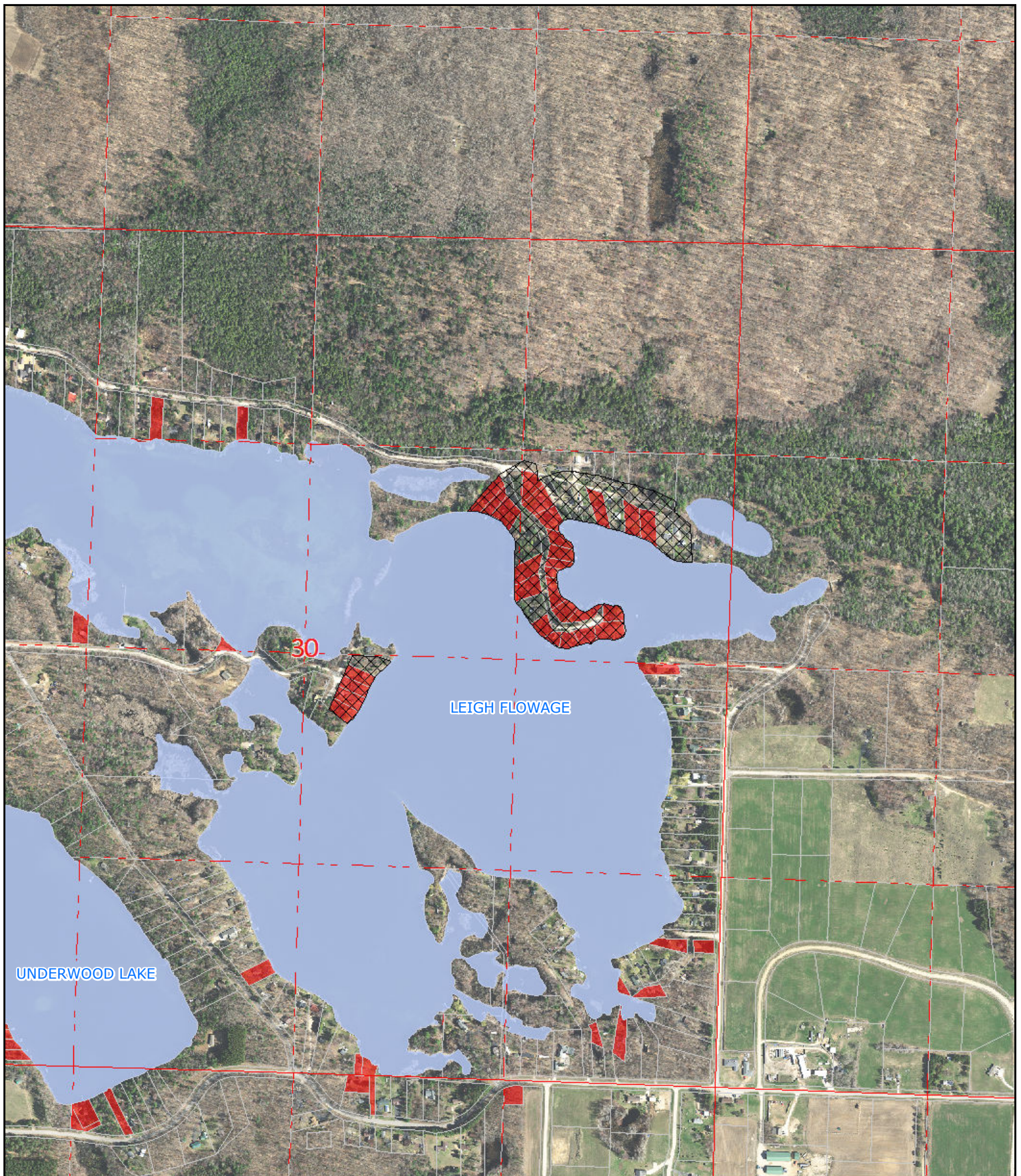
*Shoreland areas are designated as a highly developed shoreline pursuant to s. 26.903 1. b.*

### Base Map Features

- |  |              |
|--|--------------|
| County Boundary                        | Section Line |
| Town Boundary                          | County       |
| City/Village Boundary                  | Federal      |
| Parcel Boundary                        | State        |
| Sanitary District                      |              |
| Parcels 20,000 sq. ft. or Less in Size |              |

Source: Oconto County Planning; August 2016  
Reviewed and approved by DNR; August 2016

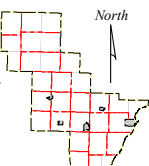




This map is neither a legally recorded map nor a survey and is not intended to be used as one. This drawing is a compilation of records, information and data used for reference purposes only. Oconto County is not responsible for any inaccuracies herein contained.



0 250 500 1,000 Feet



### Map 1.13 Leigh Flowage Highly Developed Designated Area

Highly Developed Shoreline Designation

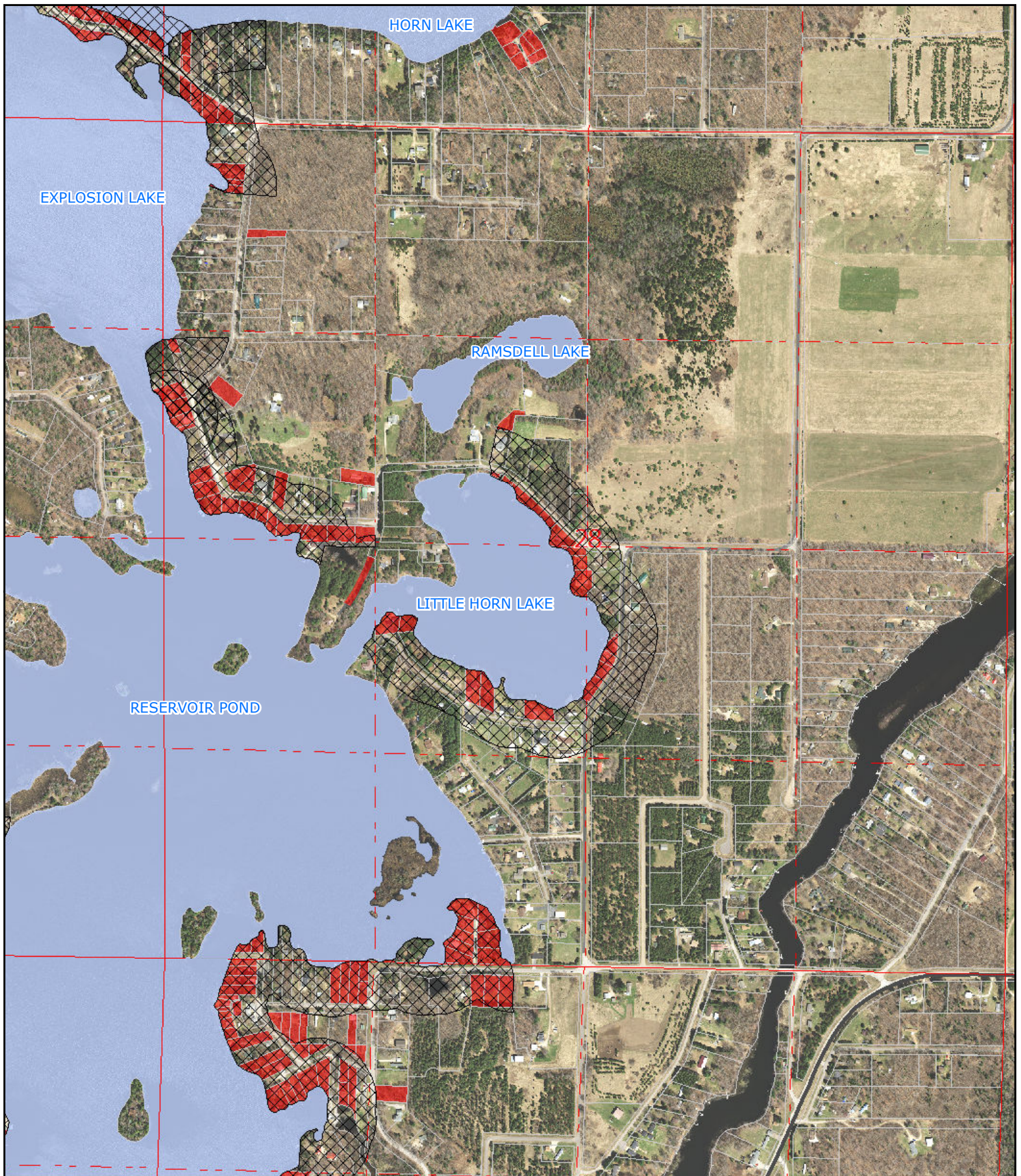
*Shoreland areas are designated as a highly developed shoreline pursuant to s. 26.903 1. b.*

### Base Map Features

- |  |              |
|--|--------------|
| County Boundary                        | Section Line |
| Town Boundary                          | County       |
| City/Village Boundary                  | Federal      |
| Parcel Boundary                        | State        |
| Sanitary District                      |              |
| Parcels 20,000 sq. ft. or Less in Size |              |

Source: Oconto County Planning; August 2016  
Reviewed and approved by DNR; August 2016

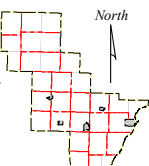




This map is neither a legally recorded map nor a survey and is not intended to be used as one. This drawing is a compilation of records, information and data used for reference purposes only. Oconto County is not responsible for any inaccuracies herein contained.



0 250 500 1,000 Feet



### Map 1.14 Little Horn Lake Highly Developed Designated Area

Highly Developed Shoreline Designation

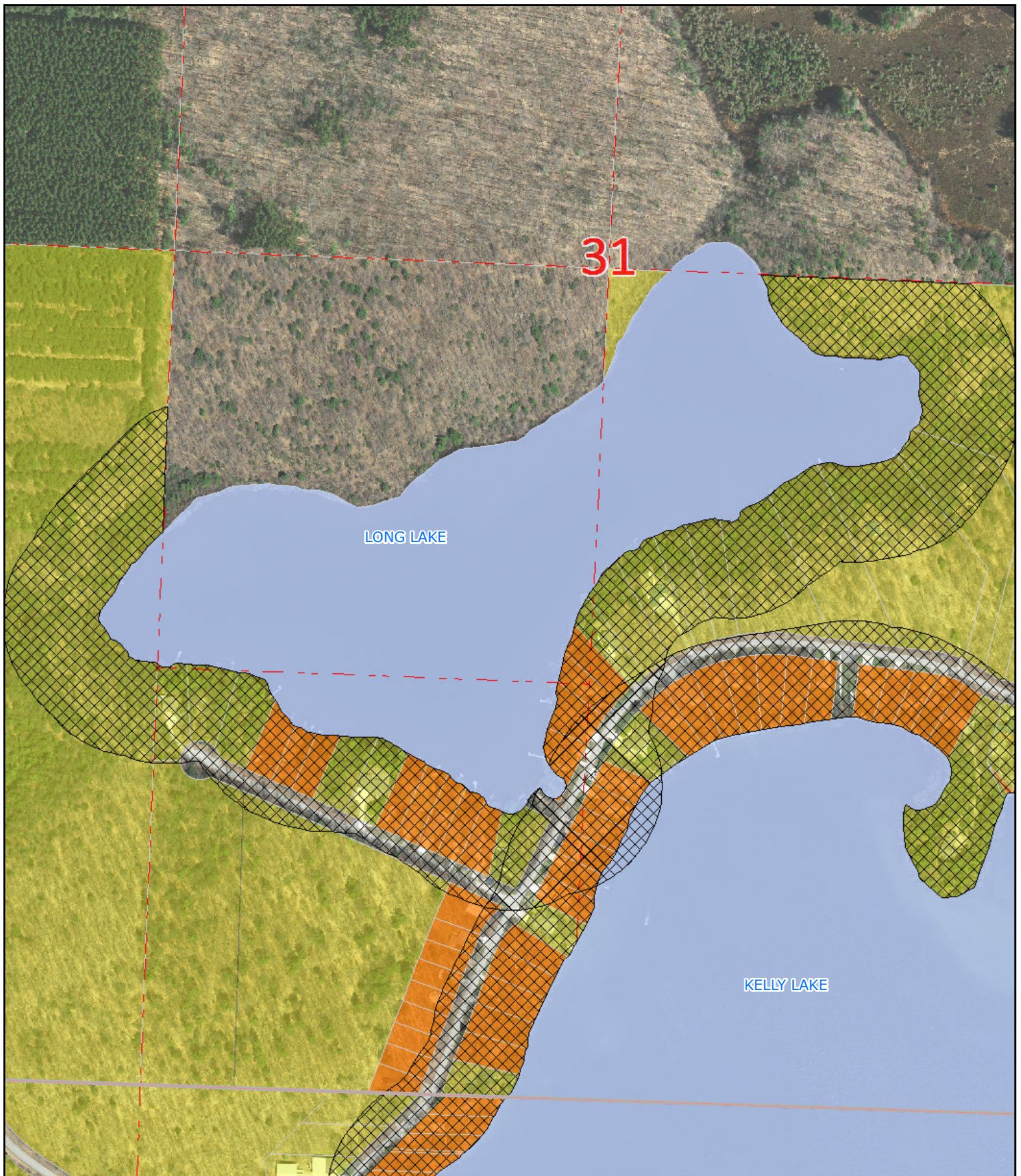
*Shoreland areas are designated as a highly developed shoreline pursuant to s. 26.903 1. b.*

#### Base Map Features

- |  |              |
|--|--------------|
| County Boundary                        | Section Line |
| Town Boundary                          | County       |
| City/Village Boundary                  | Federal      |
| Parcel Boundary                        | State        |
| Sanitary District                      |              |
| Parcels 20,000 sq. ft. or Less in Size |              |

Source: Oconto County Planning; August 2016  
Reviewed and approved by DNR; August 2016

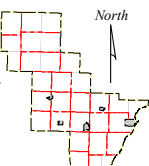




This map is neither a legally recorded map nor a survey and is not intended to be used as one. This drawing is a compilation of records, information and data used for reference purposes only. Oconto County is not responsible for any inaccuracies herein contained.



0 125 250 500 Feet



## Map 1.15 Long Lake Highly Developed Designated Area

Highly Developed Shoreline Designation

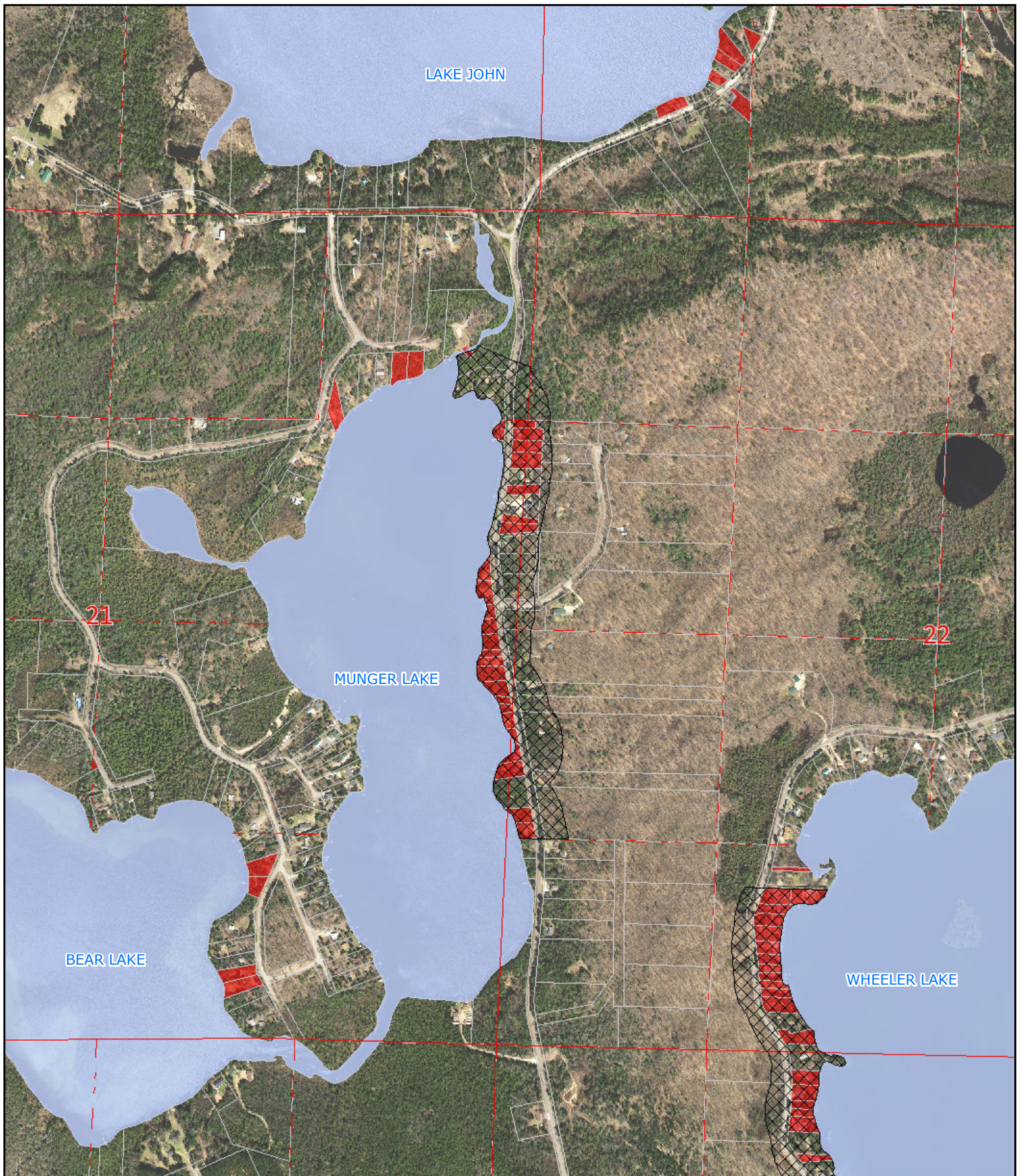
*Shoreland areas are designated as a highly developed shoreline pursuant to s. 26.903 1. b.*

### Base Map Features

- County Boundary
- Town Boundary
- City/Village Boundary
- Parcel Boundary
- Sanitary District
- Parcels 20,000 sq. ft. or Less in Size
- Section Line
- County
- Federal
- State

Source: Oconto County Planning; August 2016  
Reviewed and approved by DNR; August 2016

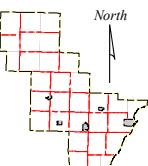




This map is neither a legally recorded map nor a survey and is not intended to be used as one. This drawing is a compilation of records, information and data used for reference purposes only. Oconto County is not responsible for any inaccuracies herein contained.



0 250 500 1,000 Feet



### Map 1.16 Munger Lake Highly Developed Designated Area

Highly Developed Shoreline Designation

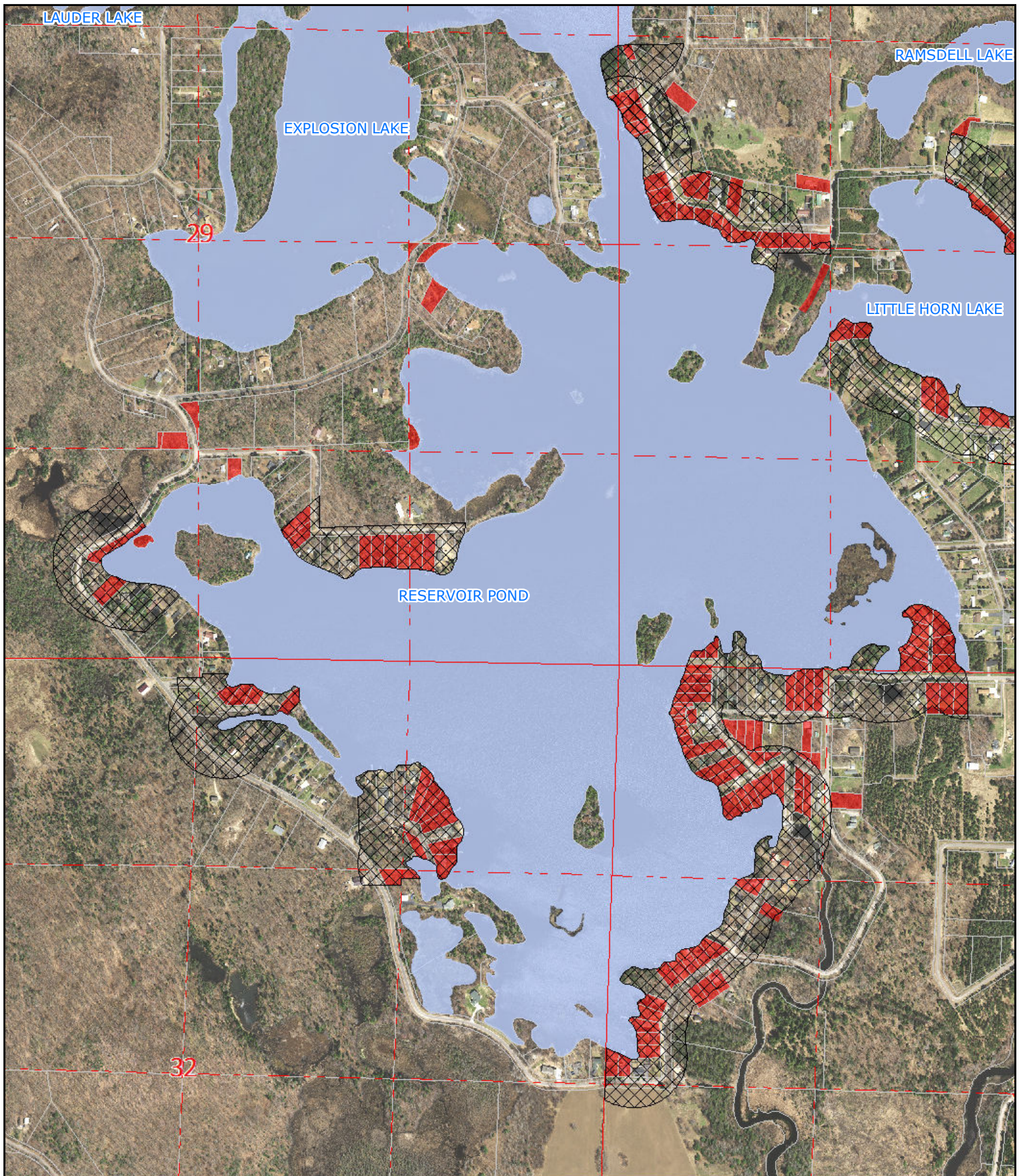
*Shoreland areas are designated as a highly developed shoreline pursuant to s. 26.903 1. b.*

#### Base Map Features

- |  |              |
|--|--------------|
| County Boundary                        | Section Line |
| Town Boundary                          | County       |
| City/Village Boundary                  | Federal      |
| Parcel Boundary                        | State        |
| Sanitary District                      |              |
| Parcels 20,000 sq. ft. or Less in Size |              |

Source: Oconto County Planning; August 2016  
Reviewed and approved by DNR; August 2016

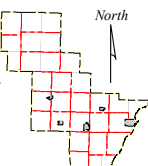




This map is neither a legally recorded map nor a survey and is not intended to be used as one. This drawing is a compilation of records, information and data used for reference purposes only. Oconto County is not responsible for any inaccuracies herein contained.



0 250 500 1,000 Feet



### Map 1.17 Reservoir Pond Highly Developed Designated Area

Highly Developed Shoreline Designation

*Shoreland areas are designated as a highly developed shoreline pursuant to s. 26.903 1. b.*

#### Base Map Features

- |  |              |
|--|--------------|
| County Boundary                        | Section Line |
| Town Boundary                          | County       |
| City/Village Boundary                  | Federal      |
| Parcel Boundary                        | State        |
| Sanitary District                      |              |
| Parcels 20,000 sq. ft. or Less in Size |              |

Source: Oconto County Planning; August 2016  
Reviewed and approved by DNR; August 2016





This map is neither a legally recorded map nor a survey and is not intended to be used as one. This drawing is a compilation of records, information and data used for reference purposes only. Oconto County is not responsible for any inaccuracies herein contained.

**Oconto County Planning & Zoning**

0 125 250 500 Feet

North

### Map 1.18 Round Lake Highly Developed Designated Area

Highly Developed Shoreline Designation

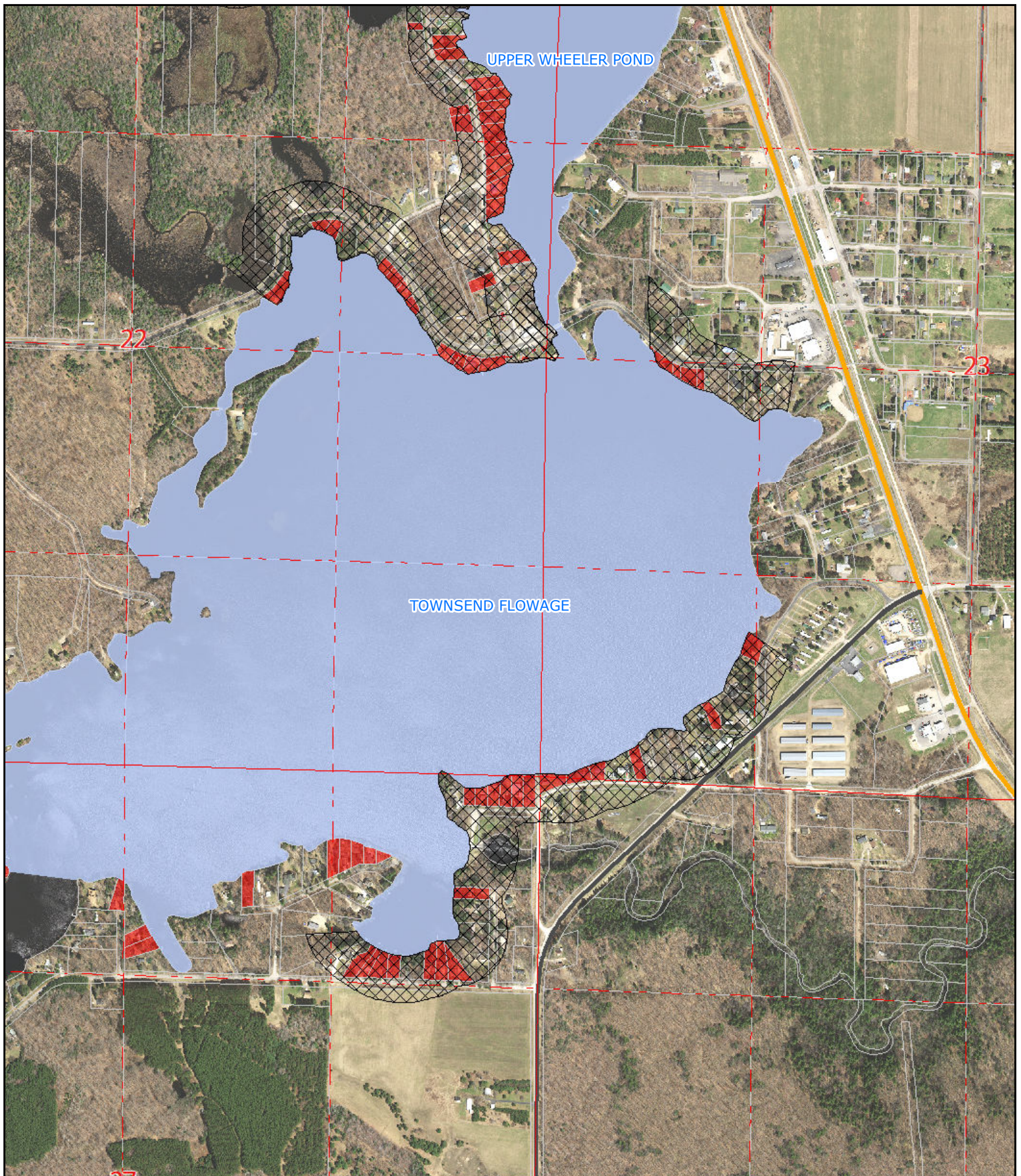
*Shoreland areas are designated as a highly developed shoreline pursuant to s. 26.903 1. b.*

### Base Map Features

County Boundary	Section Line
Town Boundary	County
City/Village Boundary	Federal
Parcel Boundary	State
Sanitary District	
Parcels 20,000 sq. ft. or Less in Size	

Source: Oconto County Planning; August 2016  
Reviewed and approved by DNR; August 2016

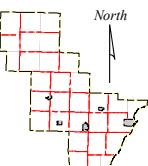




This map is neither a legally recorded map nor a survey and is not intended to be used as one. This drawing is a compilation of records, information and data used for reference purposes only. Oconto County is not responsible for any inaccuracies herein contained.



0 250 500 1,000 Feet



### Map 1.19 Townsend Flowage Highly Developed Designated Area

Highly Developed Shoreline Designation

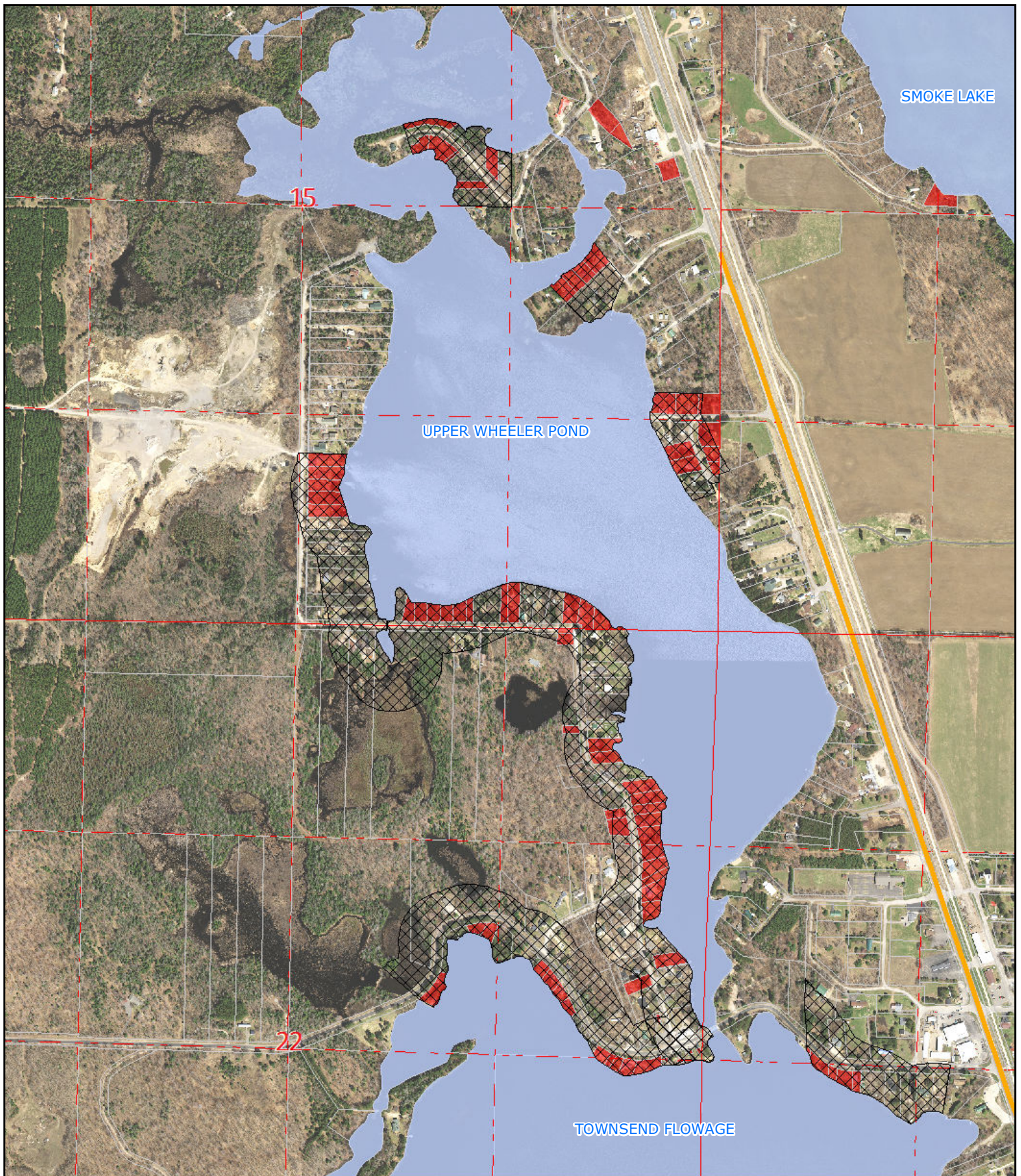
*Shoreland areas are designated as a highly developed shoreline pursuant to s. 26.903 1. b.*

### Base Map Features

- County Boundary
- Town Boundary
- City/Village Boundary
- Parcel Boundary
- Sanitary District
- Parcels 20,000 sq. ft. or Less in Size
- Section Line
- County
- Federal
- State

Source: Oconto County Planning; August 2016  
Reviewed and approved by DNR; August 2016

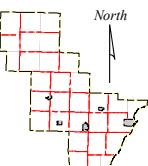





This map is neither a legally recorded map nor a survey and is not intended to be used as one. This drawing is a compilation of records, information and data used for reference purposes only. Oconto County is not responsible for any inaccuracies herein contained.



0 250 500 1,000 Feet













### Map 1.20 Upper Wheeler Pond Highly Developed Designated Area

 Highly Developed Shoreline Designation

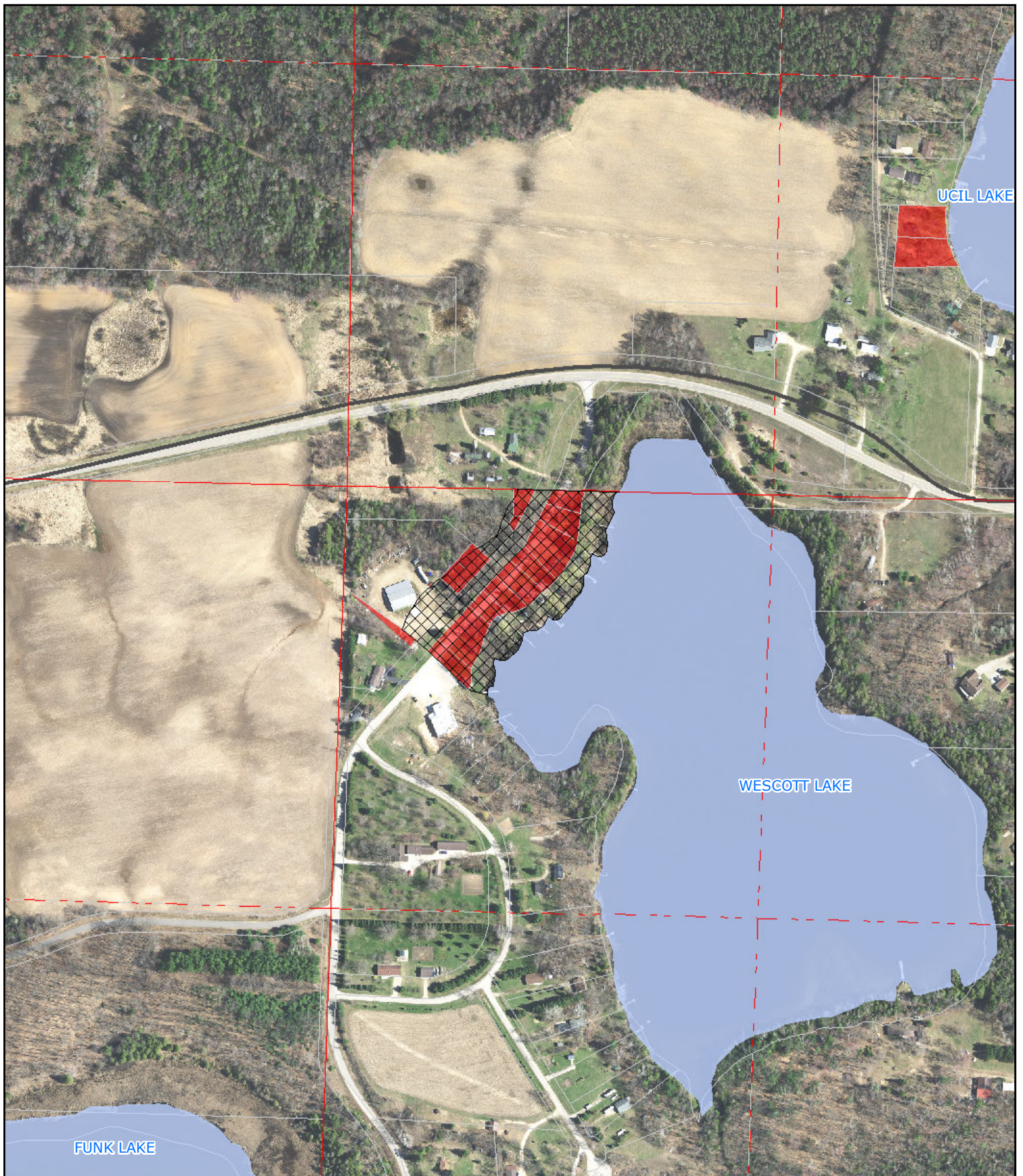
*Shoreland areas are designated as a highly developed shoreline pursuant to s. 26.903 1. b.*

#### Base Map Features

- |  |  |
|--|--|
|  County Boundary                        |  Section Line |
|  Town Boundary                          |  County       |
|  City/Village Boundary                  |  Federal      |
|  Parcel Boundary                        |  State        |
|  Sanitary District                      |  |
|  Parcels 20,000 sq. ft. or Less in Size |  |

Source: Oconto County Planning; August 2016  
Reviewed and approved by DNR; August 2016






This map is neither a legally recorded map nor a survey and is not intended to be used as one. This drawing is a compilation of records, information and data used for reference purposes only. Oconto County is not responsible for any inaccuracies herein contained.

**Oconto County**  
Wisconsin  
Oconto County Planning & Zoning

0 125 250 500 Feet











North

## Map 1.21 Wescott Lake Highly Developed Designated Area

 Highly Developed Shoreline Designation

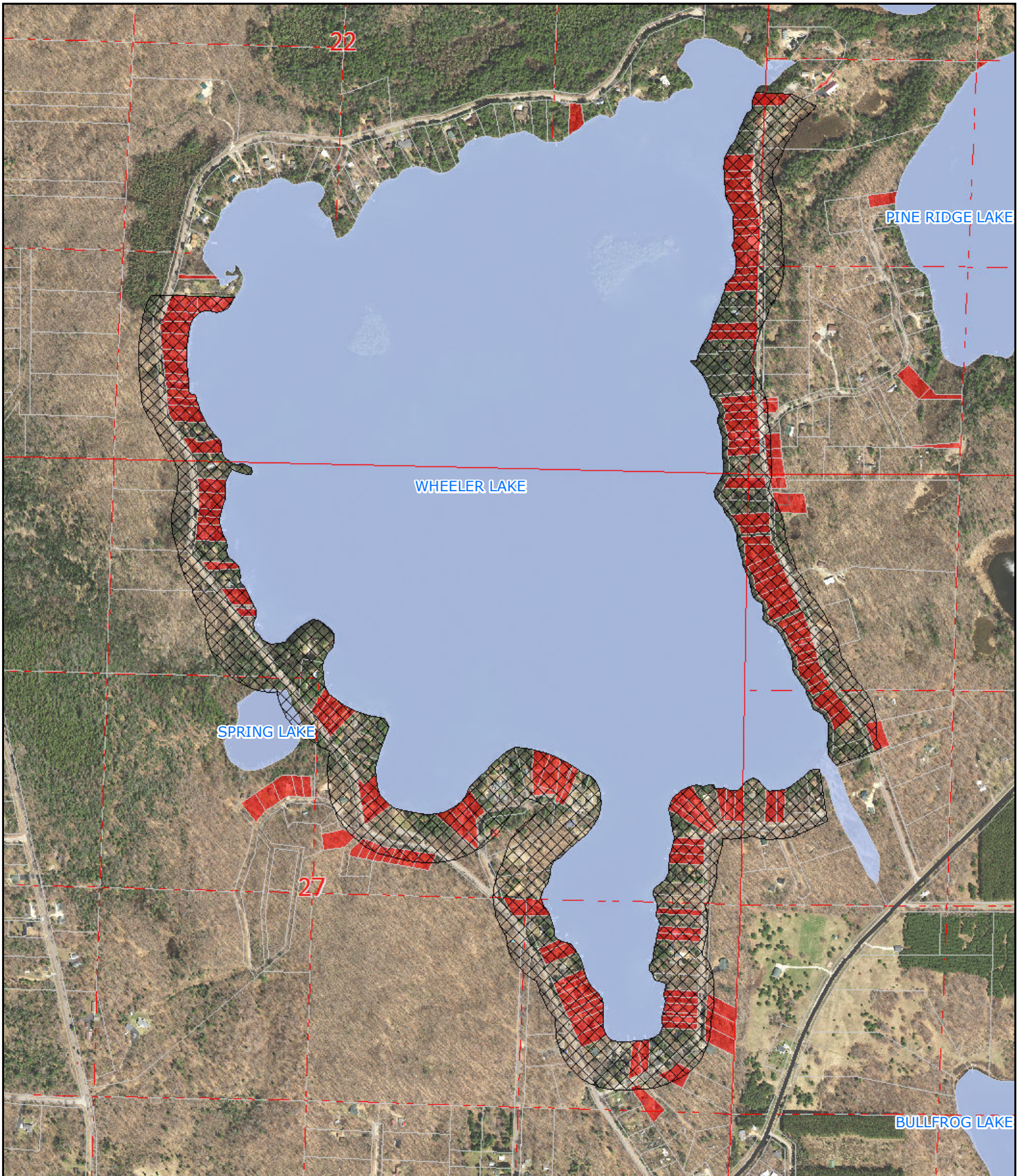
*Shoreland areas are designated as a highly developed shoreline pursuant to s. 26.903 1. b.*

### Base Map Features

- |  |  |
|--|--|
|  County Boundary                        |  Section Line |
|  Town Boundary                          |  County       |
|  City/Village Boundary                  |  Federal      |
|  Parcel Boundary                        |  State        |
|  Sanitary District                      |  |
|  Parcels 20,000 sq. ft. or Less in Size |  |

Source: Oconto County Planning; August 2016  
Reviewed and approved by DNR; August 2016

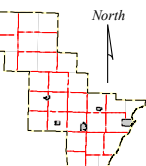




This map is neither a legally recorded map nor a survey and is not intended to be used as one. This drawing is a compilation of records, information and data used for reference purposes only. Oconto County is not responsible for any inaccuracies herein contained.



Oconto County Planning & Zoning



## Map 1.22 Wheeler Lake Highly Developed Designated Area

Highly Developed Shoreline Designation

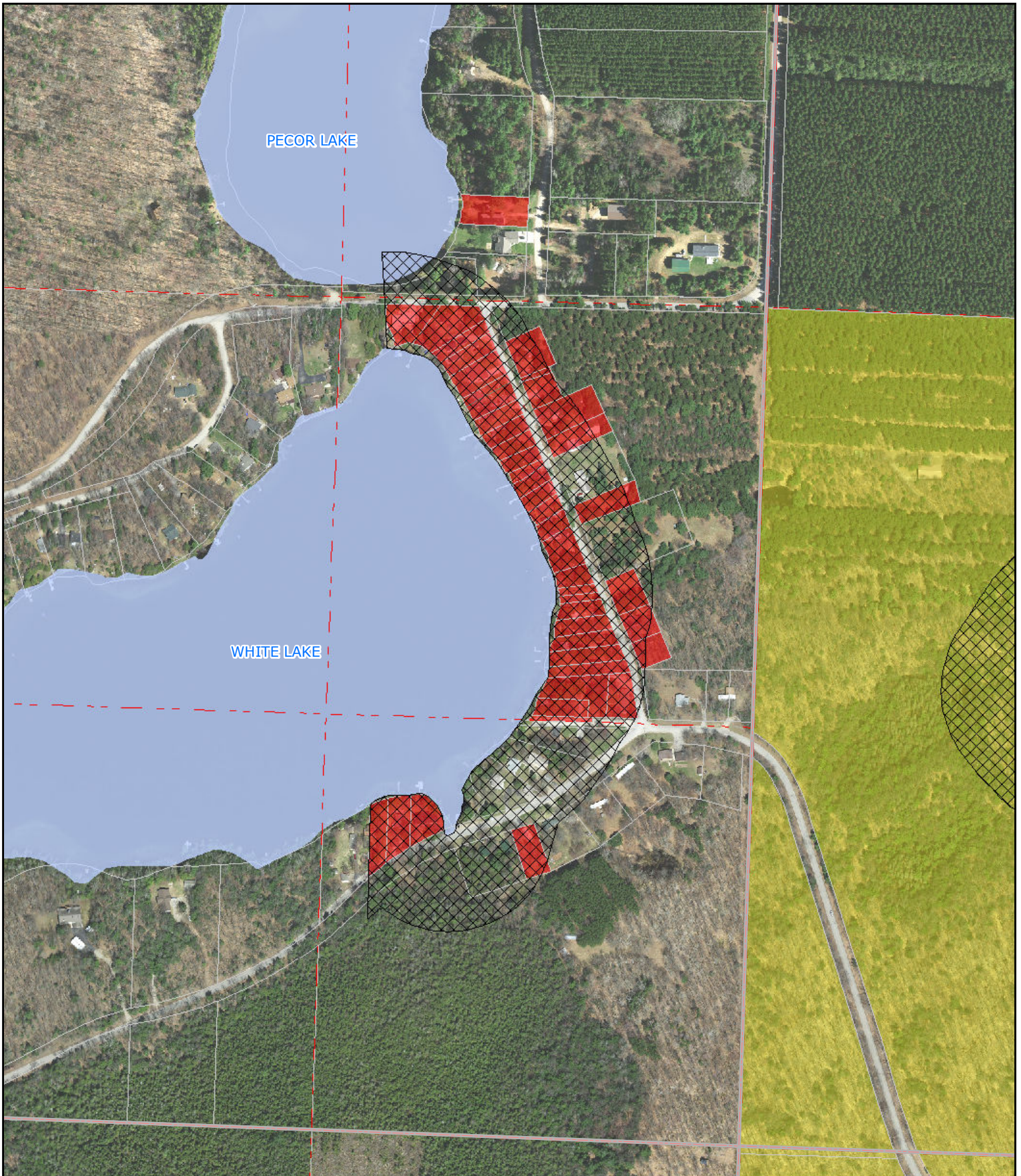
*Shoreland areas are designated as a highly developed shoreline pursuant to s. 26.903 1. b.*

### Base Map Features

- |  |              |
|--|--------------|
| County Boundary                        | Section Line |
| Town Boundary                          | County       |
| City/Village Boundary                  | Federal      |
| Parcel Boundary                        | State        |
| Sanitary District                      |              |
| Parcels 20,000 sq. ft. or Less in Size |              |

Source: Oconto County Planning; August 2016  
Reviewed and approved by DNR; August 2016

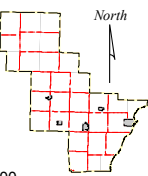




This map is neither a legally recorded map nor a survey and is not intended to be used as one. This drawing is a compilation of records, information and data used for reference purposes only. Oconto County is not responsible for any inaccuracies herein contained.



0 125 250 500 Feet



### Map 1.23 White Lake Highly Developed Designated Area

Highly Developed Shoreline Designation

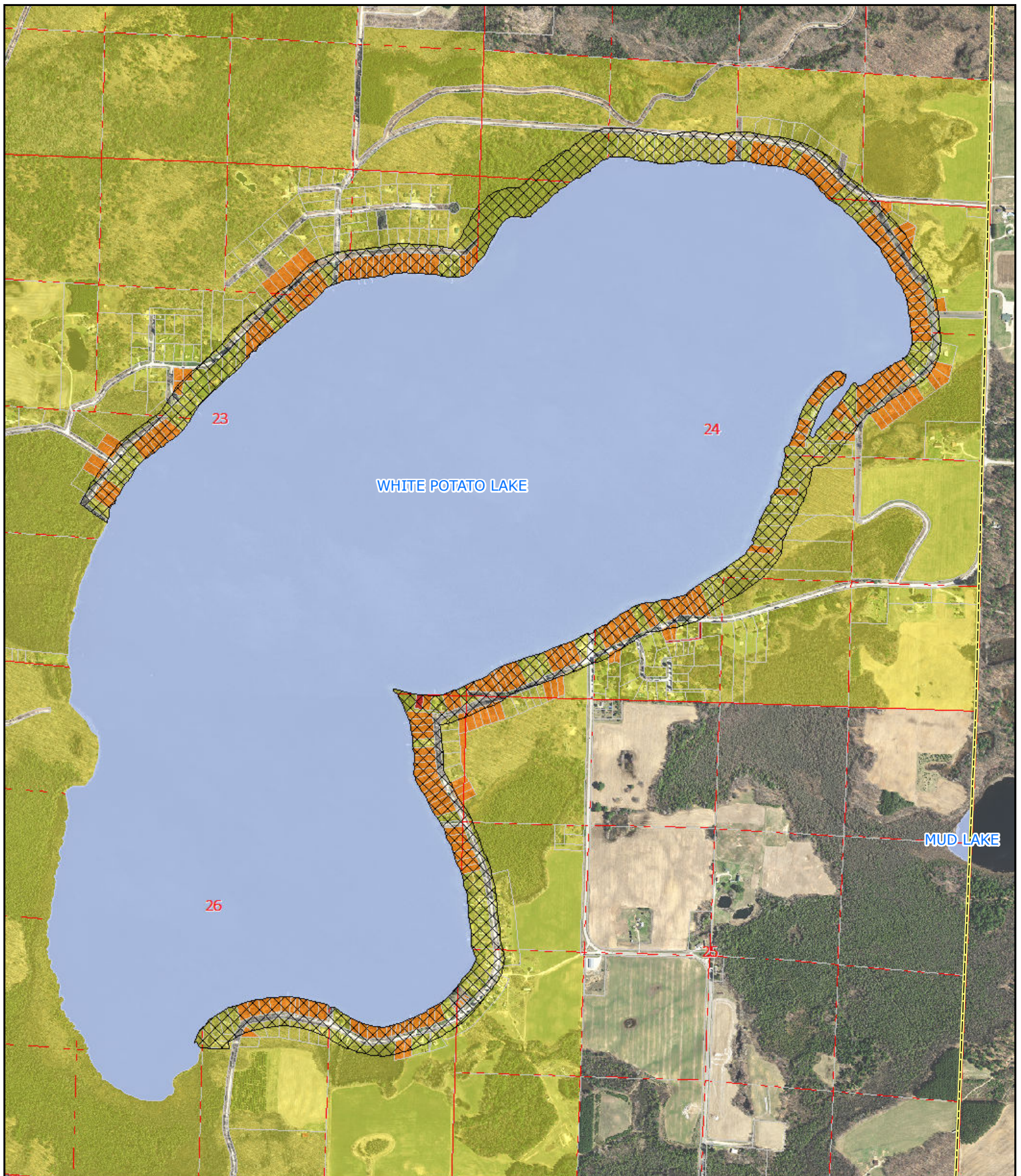
*Shoreland areas are designated as a highly developed shoreline pursuant to s. 26.903 1. b.*

#### Base Map Features

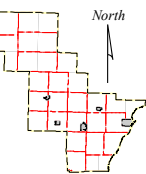
- |  |              |
|--|--------------|
| County Boundary                        | Section Line |
| Town Boundary                          | County       |
| City/Village Boundary                  | Federal      |
| Parcel Boundary                        | State        |
| Sanitary District                      |              |
| Parcels 20,000 sq. ft. or Less in Size |              |

Source: Oconto County Planning; August 2016  
Reviewed and approved by DNR; August 2016





This map is neither a legally recorded map nor a survey and is not intended to be used as one. This drawing is a compilation of records, information and data used for reference purposes only. Oconto County is not responsible for any inaccuracies herein contained.



### Map 1.24 White Potato Highly Developed Designated Area

Highly Developed Shoreline Designation

*Shoreland areas are designated as a highly developed shoreline pursuant to s. 26.903 1. b.*

### Base Map Features

- |  |              |
|--|--------------|
| County Boundary                        | Section Line |
| Town Boundary                          | County       |
| City/Village Boundary                  | Federal      |
| Parcel Boundary                        | State        |
| Sanitary District                      |              |
| Parcels 20,000 sq. ft. or Less in Size |              |

Source: Oconto County Planning; August 2016  
Reviewed and approved by DNR; August 2016